

Sanford Lions Club



THE TRADITION LIVES ON!
SEPTEMBER 11-15, 2024

Award-Winning
2024 Lee Regional Fair
Exhibits Catalog

TABLE OF CONTENTS

2024 Lee Regional Fair Exhibits Catalog

ON-LINE REGISTRATION Page 5

EXHIBIT INVENTORY FORM Page 6

BLUE RIBBON WINNERS' RAFFLE Page 7

NC STATE FAIR BEST IN SHOW Page 7

EDUCATIONAL BOOTHS Page 8

EXHIBITS Page 10

ARTS

Artwork..... Page 11

Clay Arts Page 13

Hobbies Page 14

Jewelry Page 18

Leather Crafts Page 18

Natural/Organic Decorative Crafts Page 19

Photography Page 20

Seasonal & Celebration Crafts Page 22

Weaving On & Off Loom..... Page 23

Woodcraft Page 25

BAKED GOODS

Bread..... Page 26

Cakes..... Page 27

Candy Page 28

Cookies..... Page 29

Decorated Cakes..... Page 30

Pies Page 30

FIELD CROPS

Corn (Field & Indian)	Page 31
Cotton.....	Page 31
Grain (Barley, Milo, Oats, Rye & Wheat).....	Page 31
Hay	Page 32
Cowpea (Field Peas, Crowder Peas & Blackeye Peas)	Page 32
Soybean Seeds.....	Page 32
Sunflower Seeds.....	Page 32
Soybeans (1 Stalk)	Page 32
Tobacco, (1 Hand)	Page 33
Other Field Crops, Grains, Seeds	Page 33

FOOD CONSERVATION

Butters.....	Page 35
Conserves	Page 35
Canned Fruit	Page 35
Jam.....	Page 36
Jelly	Page 36
Juice	Page 37
Marmalade.....	Page 37
Pickles	Page 37
Preserves	Page 38
Relishes	Page 39
Canned Vegetables	Page 39
Other Canned Items.....	Page 40

HANDICRAFTS

Applique.....	Page 41
Crewel	Page 41
Crochet.....	Page 42
Cross Stitch.....	Page 43
Embroidery	Page 44
Knitting	Page 44
Needlepoint	Page 45
Plastic Canvas.....	Page 46
Punch Needle	Page 46
Quilts	Page 47

HORTICULTURE

Arrangements	Page 49
Container-Grown Plants	Page 49
Cut Flowers	Page 51
Cut Foliage	Page 53
Fruits	Page 54
Hanging Basket	Page 55
Herbs	Page 56
Table Top Gardens.....	Page 57
Tree Fruits	Page 58
Vegetables	Page 59

LIVESTOCK

Exhibitor Pens	Page 63
Livestock Contest	Page 63
Poultry & Fowl	Page 64

MISCELLANEOUS

Antiques (Before 1960).....	Page 65
Beer	Page 66
Cider.....	Page 66
Beeswax.....	Page 66
Cane Syrup	Page 67
Dried Items	Page 67
Eggs	Page 68
Honey	Page 68
Soap (Homemade)	Page 68
Trash To Treasurer (Recycled Items)	Page 69
Vinegars	Page 70
Wines.....	Page 70

SEWING

Infant Clothing	Page 71
Clothing.....	Page 72
Household Items	Page 73



ONLINE ENTRY REGISTRATION

www.FairEntry.com

Online Registration opened on July 10, 2024 and will close Thursday, September 5, 2024.

By using online registration Exhibitors will find the registration and entry process to be quick and convenient.

Complete the online registration process by creating an account at fairentry.com then moving through the data entry pages. Your entry cards will be waiting for you when you bring your Fair entries to the Agricultural Building.

NOTE: There are NO fees for entries! However, you still must select "Continue to Payment" in order to submit your entries.

To speed up entering your items into the Fair, we encourage you to complete the Inventory Form and then use this to help you with the online process at fairentry.com. Bring a copy to exhibit check-in.

If you are unable to enter your exhibits on-line, bring them and your completed Inventory form to the Fairgrounds on Saturday, September 7, and Sunday, September 8, 2024. Entry take-in is 1-6pm each day.

Judging of entries will take place on Monday, September 9, 2024. Exhibit Hall is closed on Monday and Tuesday. Winners will be posted on Opening Day.



BLUE-RIBBON WINNERS' RAFFLE

You can be a **BIG** winner at this year's Fair! One youth and one adult will receive \$250 each from the Blue-Ribbon Raffle. The more you enter the more chances you have to win 1st place and be entered into the Blue-Ribbon Raffle. The drawing will be held on opening night and the winners will be notified to pick up their winnings during Fair Week. Don't miss this opportunity. Scan the Fair Exhibits Catalog and enter online at fairentry.com and bring your items to check-in at the Fairgrounds.



NC STATE FAIR BEST OF SHOW

The Lee Regional Fair will again participate in the NC State Fair "Best of Show" competition. One adult and one youth entry will be selected to be on display in the State Fair's exhibit and will compete against other Fairs in NC. Just for participating the Exhibitors will receive \$100 and if their item wins, another \$200!



EDUCATIONAL BOOTHS

AGRICULTURAL EXHIBIT HALL

This year's Fair theme is "The Tradition Lives On!".

To reserve an Educational Booth contact North Carolina Cooperative Extension, Lee County, 2420 Tramway Road, Sanford or call 919-775-5624.

Educational exhibits are unmanned and should promote economic, social, physical and recreational growth and development of the rural and urban communities.

Educational booths are available for youth, adult community, civic and non-profit organizations.



RULES AND REGULATIONS

Booths **MUST** have an educational message and not focus on promoting the organization. Nonprofit booths must be educational and not just promote the organization.

Booths are not manned and the selling of raffle tickets or other items is prohibited.

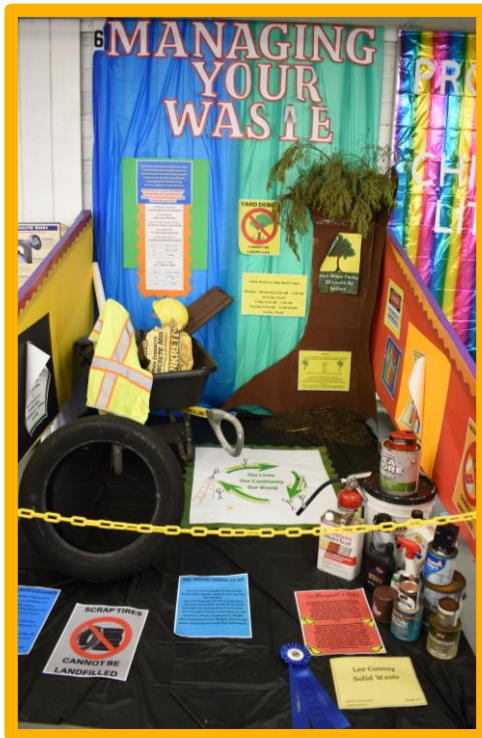
Booth set-up is Thursday and Friday, prior to Fair Week from 1-6 pm. No weekend setup.

Judging will take place on Monday prior to opening day.

Booths have concrete floors, wooden side partitions and a wooden back wall panel. All booths are 6 feet wide and 8 feet deep and the wooden back panels are 8 feet tall. Any sidewalls constructed by Exhibitors cannot exceed 5 feet in height.

120V AC outlets are located at random intervals on the back wall approximately 19 inches from the floor. A few booths will not have an outlet within the booth itself but will share an outlet with an adjoining booth. This adjoining outlet will be within one

foot of the partition and may be reached by running an extension cord under the partition.



Displays may not extend over the side partitions or into the aisle.

Displays may be fastened to the booth by double sided *mounting* tape (masking, duct, and double-sided tape will not hold all week), 1/4-inch staples, or small brads. No large nails or screws are permitted and nothing should be attached to the ceiling without first contacting the Exhibit Hall Manager.

Exhibitors must provide all tools, supplies, tables, chairs, stepladders or other equipment needed to construct the booth.

Prior to setting up the booth, groups must check-in with the Exhibit Hall Manager.

Booths must remain intact and in place for the duration of the Fair.

Booth teardown and removal of all materials/debris from the premises will be Tuesday, 3:00pm - 6:00pm, immediately following the Fair.

All tape, staples, other fasteners, etc. must be removed from the partitions and back wall. Non-removal of these items may forfeit future participation and/or prize premium.

Exhibit Hall Manager will inspect the booth and issue premium when teardown is completed and debris removed.

BEST IN SHOW IN EDUCATIONAL BOOTHS: ribbon and \$50 premium will be awarded to the educational booth with the highest combined total points.

All youth, adult community, civic and non-profit organizations not-placing will receive a \$25 premium.

PREMIUMS are awarded to each of the following divisions:

- 4-H Clubs
- Vocational Education Groups
- Other Youth Groups
- Adult & Civic Organizations

First Place	\$100
Second Place	\$80
Third Place	\$70
Fourth Place	\$60
BEST IN SHOW - Booths	\$50
Non-placing	\$25



EXHIBITS



All Exhibitors are encouraged to register exhibits online at faireentry.com. Use of the inventory form will make entering easy.



Entries will be taken in on September 5 & 6, 2024 for Photography & Artwork. All other entries accepted on Sept. 7 & 8, 2024.

Due to space limitation, oversize items must be cleared with the exhibit hall manager before entering.

Entries must be made, grown or constructed by the exhibitor and completed since the last fair.

COMPETITION LEVELS: Youth Grades K-2; Grades 3-5; Grades 6-8; Grades 9-12 and Adults.

Contact Danny Duggin, Exhibit Hall Manager at 919-721-1236 for additional information.





ARTS



PREMIUMS

BLUE	1ST Place	\$8
RED	2ND Place	\$6
WHITE	3RD Place	\$4

COMPETITION LEVELS: Youth Grades K-2; Grades 3-5; Grades 6-8; Grades 9-12 and Adults.

Entries must be original work of the Exhibitors, not copy righted, and completed since the last fair.

Adult Exhibitors Artwork: Entries must be no larger than 18x24 overall inches including optional frame. Canvas frames are acceptable. All must have a hook or wire for hanging.

Grades 9-12 Exhibitors

Artwork: Entries must be no larger than 18x24 overall inches, including optional frame. Must have a hook or wire for hanging. Paper Artwork, not framed, may be entered and will be hung with push pins.

Grades Youth K-2, 3-5, 6-8 Exhibitors Artwork: Entries must be no larger than 12x18 inches overall. No frames. Push pins will be used for hanging.

Any exceptions must be approved by Exhibit Hall Manager.

BEST IN SHOW - ARTWORK: Considering blue ribbon winners, a \$50 premium and ribbon will be awarded in age divisions K-2, 3-5, 6-8, 9-12 and Adult.

Honorable Mention: Judges may award Honorable Mention ribbons in any category and age groups.

Due to space limitation, oversize items must be cleared with the exhibit hall manager before entering.



ARTWORK

BEST IN SHOW - ARTWORK: Considering blue ribbon winning exhibits, a \$50 premium and Best In Show ribbon will be awarded in age divisions K-2, 3-5, 6-8, 9-12 and Adult.

BEST IN SHOW - Artwork K-2, 3-5, 6-8, 9-12, Adult	\$50
--	-------------

Abstract	Adult Exhibitors Exhibitors Grades K-2 Exhibitors Grades 3-5 Exhibitors Grades 6-8 Exhibitors Grades 9-12
Animals, Bird & Fish	Adult Exhibitors Exhibitors Grades K-2 Exhibitors Grades 3-5 Exhibitors Grades 6-8 Exhibitors Grades 9-12
Collage	Adult Exhibitors Exhibitors Grades K-2 Exhibitors Grades 3-5 Exhibitors Grades 6-8 Exhibitors Grades 9-12
Digital	Adult Exhibitors Exhibitors Grades 3-5 Exhibitors Grades 6-8 Exhibitors Grades 9-12
Floral or Plant	Adult Exhibitors Exhibitors Grades K-2 Exhibitors Grades 3-5 Exhibitors Grades 6-8 Exhibitors Grades 9-12
Landscape	Adult Exhibitors Exhibitors Grades K-2 Exhibitors Grades 3-5 Exhibitors Grades 6-8 Exhibitors Grades 9-12
Lee Regional Fair Scene	Adult Exhibitors Exhibitors Grades 3-5 Exhibitors Grades 6-8 Exhibitors Grades 9-12

Monochromatic	Adult Exhibitors Exhibitors Grades K-2 Exhibitors Grades 3-5 Exhibitors Grades 6-8 Exhibitors Grades 9-12
Portraits	Adult Exhibitors Exhibitors Grades K-2 Exhibitors Grades 3-5 Exhibitors Grades 6-8 Exhibitors Grades 9-12
Sculpture (no ceramic or pottery)	Adult Exhibitors Exhibitors Grades 3-5 Exhibitors Grades 6-8 Exhibitors Grades 9-12
Still Life	Adult Exhibitors Exhibitors Grades K-2 Exhibitors Grades 3-5 Exhibitors Grades 6-8 Exhibitors Grades 9-12
Structural	Adult Exhibitors Exhibitors Grades K-2 Exhibitors Grades 3-5 Exhibitors Grades 6-8 Exhibitors Grades 9-12
Waterscapes	Adult Exhibitors Exhibitors Grades K-2 Exhibitors Grades 3-5 Exhibitors Grades 6-8 Exhibitors Grades 9-12

CLAY ARTS (to include ceramics & pottery)

This category encompasses any art sculpture made with baked, air-dried or fired clay or ceramics.

BEST IN SHOW - CLAY ARTS: Considering blue ribbon winning exhibits, a \$50 premium and Best In Show ribbon will be awarded in age divisions 3-5, 6-8, 9-12 and Adult.

BEST IN SHOW - Clay Arts 3-5, 6-8, 9-12, Adult	\$50
---	-------------

Ceramics Cast, Decorative Piece	Adult Exhibitors
Ceramics Cast, Dishware	Adult Exhibitors
Ceramics Cast, Doll	Adult Exhibitors
Ceramics Cast, Holiday Pieces	Adult Exhibitors
Ceramics Cast, Set (3 or more pieces)	Adult Exhibitors
Modeling Clay Item	Exhibitors Grades K-2 Exhibitors Grades 3-5 Exhibitors Grades 6-8
Pottery, Coil Built, Hand Built	Adult Exhibitors Exhibitors Grades K-2 Exhibitors Grades 3-5 Exhibitors Grades 6-8 Exhibitors Grades 9-12
Pottery, Pinch, Hand Built	Exhibitors Grades K-2 Exhibitors Grades 3-5
Pottery, Raku	Adult Exhibitors
Pottery, Slab Built, Hand Built	Adult Exhibitors
Pottery, Turned Decorative or Serviceable Item	Adult Exhibitors Exhibitors Grades 3-5 Exhibitors Grades 6-8 Exhibitors Grades 9-12
Sculpture, Clay	Adult Exhibitors Exhibitors Grades 6-8 Exhibitors Grades 9-12
y_Any Ceramics Cast Item	Exhibitors Grades 3-5 Exhibitors Grades 6-8 Exhibitors Grades 9-12
z_Other Ceramics Cast Item (Identify, not listed above)	Adult Exhibitors

HOBBIES

Bean and Seed Craft	Exhibitors Grades K-2 Exhibitors Grades 3-5 Exhibitors Grades 6-8 Exhibitors Grades 9-12
----------------------------	---

Button Art	Adult Exhibitors Exhibitors Grades K-2 Exhibitors Grades 3-5 Exhibitors Grades 6-8 Exhibitors Grades 9-12
Collection, Any (10 items)	Adult Exhibitors Exhibitors Grades K-2 Exhibitors Grades 3-5 Exhibitors Grades 6-8 Exhibitors Grades 9-12
Coloring Book Pages (10-15 pages in binder)	Adult Exhibitors Exhibitors Grades K-2 Exhibitors Grades 3-5 Exhibitors Grades 6-8 Exhibitors Grades 9-12
Decoupage	Adult Exhibitors
Diamond Art Painting Sizes accepted: 20cm (roughly 8"x8"), or 45cm (roughly 18"x18")	Adult Exhibitors Exhibitors Grades 6-8 Exhibitors Grades 9-12
Doll, Handmade with Original Dress, Hand or Machine Sewn	Adult Exhibitors Exhibitors Grades 9-12
Door/Wall Decoration (not holiday)	Adult Exhibitors Exhibitors Grades K-2 Exhibitors Grades 3-5 Exhibitors Grades 6-8 Exhibitors Grades 9-12
Duct Tape, Any item	Exhibitors Grades K-2 Exhibitors Grades 3-5 Exhibitors Grades 6-8 Exhibitors Grades 9-12
Flowers, Artificial Arrangement	Adult Exhibitors Exhibitors Grades 6-8 Exhibitors Grades 9-12
Hand Painted Bird, Bat or Butterfly House	Adult Exhibitors Exhibitors Grades K-2 Exhibitors Grades 3-5 Exhibitors Grades 6-8 Exhibitors Grades 9-12
Hand Painted Glassware (3)	Adult Exhibitors Exhibitors Grades 9-12

Hand Painted Glassware (3)	Adult Exhibitors Exhibitors Grades 9-12
Hand Painted Surface (slate, metal, wood) not listed above	Adult Exhibitors Exhibitors Grades 9-12
Hand Painted on Fabric	Adult Exhibitors Exhibitors Grades K-2 Exhibitors Grades 3-5 Exhibitors Grades 6-8 Exhibitors Grades 9-12
Macramé	Adult Exhibitors
Mesh Wreath	Adult Exhibitors
Metal Craft	Adult Exhibitors
Model Made from Kit	Adult Exhibitors Exhibitors Grades K-2 Exhibitors Grades 3-5 Exhibitors Grades 6-8 Exhibitors Grades 9-12
Model Made from Legos	Adult Exhibitors Exhibitors Grades K-2 Exhibitors Grades 3-5 Exhibitors Grades 6-8 Exhibitors Grades 9-12
Mosaic Decorative Item	Adult Exhibitors Exhibitors Grades K-2 Exhibitors Grades 3-5 Exhibitors Grades 6-8 Exhibitors Grades 9-12
Origami (3 items)	Adult Exhibitors Exhibitors Grades K-2 Exhibitors Grades 3-5 Exhibitors Grades 6-8 Exhibitors Grades 9-12
Scarecrow, Funniest, self-standing no larger than 5 ft. high and 2 ft. deep and 3 ft. wide	Adult Exhibitors Exhibitors Grades K-2 Exhibitors Grades 3-5 Exhibitors Grades 6-8 Exhibitors Grades 9-12
Scarecrow, Traditional, self-standing no larger than 5 ft. high and 2 ft. deep and 3 ft. wide	Adult Exhibitors Exhibitors Grades K-2 Exhibitors Grades 3-5 Exhibitors Grades 6-8 Exhibitors Grades 9-12
Scherenschnitte (paper cutting folk-art)	Adult Exhibitors Exhibitors Grades 3-5 Exhibitors Grades 6-8 Exhibitors Grades 9-12

JEWELRY

Beaded Jewelry	Adult Exhibitors Exhibitors Grades K-2 Exhibitors Grades 3-5 Exhibitors Grades 6-8 Exhibitors Grades 9-12
Ceramic Jewelry	Adult Exhibitors
Glass Jewelry	Adult Exhibitors
Jewelry from Recycled Items	Adult Exhibitors
Metal Jewelry	Adult Exhibitors
Natural/Organic Material Jewelry	Adult Exhibitors
Paper or Plastic Jewelry	Adult Exhibitors
z_Other Jewelry Material (Identify, not listed above)	Adult Exhibitors Exhibitors Grades K-2 Exhibitors Grades 3-5 Exhibitors Grades 6-8 Exhibitors Grades 9-12

LEATHER CRAFTS

Leather Belt	Adult Exhibitors
Leather Handbag or Pocketbook	Adult Exhibitors
z_Other Leather Craft Item (Identify, not listed above)	Adult Exhibitors



NATURAL/ORGANIC DECORATIVE CRAFTS

Baskets	Adult Exhibitors Exhibitors Grades K-2 Exhibitors Grades 3-5 Exhibitors Grades 6-8 Exhibitors Grades 9-12
Cane, Rush or Sea Grass	Adult Exhibitors
Gourd, Birdhouse (1)	Adult Exhibitors
Gourd, Long Handle/Dipper (1)	Adult Exhibitors
Gourd, Most Unusual (1)	Adult Exhibitors Exhibitors Grades K-2 Exhibitors Grades 3-5 Exhibitors Grades 6-8 Exhibitors Grades 9-12
Gourd, Ornamental (3)	Adult Exhibitors Exhibitors Grades K-2 Exhibitors Grades 3-5 Exhibitors Grades 6-8 Exhibitors Grades 9-12
Gourd, Painted (1)	Adult Exhibitors
Grapevine Item	Adult Exhibitors
Long Leaf Pine Item	Adult Exhibitors
Pecan Shell Item	Adult Exhibitors
Pine Cone Item	Adult Exhibitors Exhibitors Grades K-2 Exhibitors Grades 3-5 Exhibitors Grades 6-8 Exhibitors Grades 9-12
Pumpkin, Painted (1)	Adult Exhibitors Exhibitors Grades K-2 Exhibitors Grades 3-5 Exhibitors Grades 6-8 Exhibitors Grades 9-12
Rocks, Hand-painted (3)	Adult Exhibitors Exhibitors Grades K-2 Exhibitors Grades 3-5 Exhibitors Grades 6-8 Exhibitors Grades 9-12

Sea Shell Item	Adult Exhibitors Exhibitors Grades K-2 Exhibitors Grades 3-5 Exhibitors Grades 6-8 Exhibitors Grades 9-12
Wreath	Adult Exhibitors Exhibitors Grades 3-5 Exhibitors Grades 6-8 Exhibitors Grades 9-12
z_Other Natural/Organic Item (Identify, not listed above)	Adult Exhibitors Exhibitors Grades K-2 Exhibitors Grades 3-5 Exhibitors Grades 6-8 Exhibitors Grades 9-12

PHOTOGRAPHY

BEST IN SHOW - PHOTOGRAPHY: Considering blue ribbon entries, a \$50 premium and Best In Show ribbon will be awarded in age divisions 3-5, 6-8, 9-12 and Adult.

BEST IN SHOW - Photography 3-5, 6-8, 9-12, Adult	\$50
---	-------------

Adult and Grades 9-12: entries must be matted and framed. Frames must have eyehooks and wires on the back for hanging. Photo size is a minimum of 5" x 7". Frame size maximum is 15 x 18". All photos must meet these standards in order to be accepted for judging.



Grades K-2, 3-5, 6-8: photo size is a minimum of 5" x 7". No frames or foam core board backing is permitted, push pins are used for hanging.



SPECIAL THANKS extended to the Sanford Area Photography Club (SAPC) for their assistance with the collection and hanging of photography entries.

Action/Sport	Adult Exhibitors Exhibitors Grades 3-5 Exhibitors Grades 6-8 Exhibitors Grades 9-12
Animals (Pets, Wildlife, Birds)	Adult Exhibitors Exhibitors Grades 3-5 Exhibitors Grades 6-8 Exhibitors Grades 9-12
Buildings	Adult Exhibitors Exhibitors Grades 3-5 Exhibitors Grades 6-8 Exhibitors Grades 9-12
Flowers and Plants	Adult Exhibitors Exhibitors Grades 3-5 Exhibitors Grades 6-8 Exhibitors Grades 9-12
Landscapes	Adult Exhibitors Exhibitors Grades 3-5 Exhibitors Grades 6-8 Exhibitors Grades 9-12
Lee Regional Fair Scene	Adult Exhibitors Exhibitors Grades 3-5 Exhibitors Grades 6-8 Exhibitors Grades 9-12
Macro (Any Subject)	Adult Exhibitors Exhibitors Grades 3-5 Exhibitors Grades 6-8 Exhibitors Grades 9-12
Night Scene	Adult Exhibitors Exhibitors Grades 3-5 Exhibitors Grades 6-8 Exhibitors Grades 9-12
People	Adult Exhibitors Exhibitors Grades 3-5 Exhibitors Grades 6-8 Exhibitors Grades 9-12
Sanford Farmers Market	Adult Exhibitors Exhibitors Grades 3-5 Exhibitors Grades 6-8 Exhibitors Grades 9-12
Still Life (No Flowers or Plants)	Adult Exhibitors Exhibitors Grades 3-5 Exhibitors Grades 6-8 Exhibitors Grades 9-12
Transportation	Adult Exhibitors Exhibitors Grades 3-5 Exhibitors Grades 6-8 Exhibitors Grades 9-12

Waterscapes	Adult Exhibitors Exhibitors Grades 3-5 Exhibitors Grades 6-8 Exhibitors Grades 9-12
x_Any Photography	Exhibitors Grades K-2
z_Other Photography (Identify, not listed above)	Adult Exhibitors

SEASONAL & CELEBRATION CRAFTS

Seasonal/Celebration Basket	Adult Exhibitors
Seasonal/Celebration Card	Adult Exhibitors
Seasonal/Celebration Door or Wall Decoration (no wreaths)	Adult Exhibitors
Seasonal/Celebration Figurine	Adult Exhibitors
Seasonal/Celebration Jewelry	Adult Exhibitors
Seasonal/Celebration Lamp Post or Mail Box Decoration	Adult Exhibitors
Seasonal/Celebration Napkins (4)	Adult Exhibitors
Seasonal/Celebration Place Setting (1 on tray up to 12"x20")	Adult Exhibitors
Seasonal/Celebration Placemats with Napkins (1)	Adult Exhibitors
Seasonal/Celebration Plastic Canvas Decoration	Adult Exhibitors Exhibitors Grades K-2 Exhibitors Grades 3-5 Exhibitors Grades 6-8 Exhibitors Grades 9-12
Seasonal/Celebration Rug (woven or non-woven)	Adult Exhibitors
Seasonal/Celebration Scarf or Accessory	Adult Exhibitors Exhibitors Grades 9-12
Seasonal/Celebration Stocking	Adult Exhibitors

Seasonal/Celebration Sweatshirt/T-Shirt	Adult Exhibitors
Seasonal/Celebration Table Cover (Tablecloth, Runner, Scarf, etc.)	Adult Exhibitors
Seasonal/Celebration Table or Mantle Decoration (Centerpiece, Candle Holders, etc.)	Adult Exhibitors
Seasonal/Celebration Towels (2)	Adult Exhibitors
Seasonal/Celebration Toy	Adult Exhibitors
Seasonal/Celebration Tree Ornament (must have a hook or loop for hanging)	Adult Exhibitors Exhibitors Grades K-2 Exhibitors Grades 3-5 Exhibitors Grades 6-8 Exhibitors Grades 9-12
Seasonal/Celebration Tree Skirt	Adult Exhibitors
Seasonal/Celebration Window Decoration (no wreaths)	Adult Exhibitors Exhibitors Grades K-2 Exhibitors Grades 3-5 Exhibitors Grades 6-8 Exhibitors Grades 9-12
Seasonal/Celebration Wrapped Package (judged on beauty, creativity, and originality)	Adult Exhibitors
Seasonal/Celebration Wreath	Adult Exhibitors
z_Other Seasonal/Celebration Decoration (not listed, identify)	Adult Exhibitors

WEAVING - ON & OFF LOOM

Braided Item (Identify)	Adult Exhibitors Exhibitors Grades 6-8 Exhibitors Grades 9-12
Hooked Item (Identify)	Adult Exhibitors Exhibitors Grades 6-8 Exhibitors Grades 9-12
Knotted or Tufted Item (Identify)	Adult Exhibitors Exhibitors Grades 6-8 Exhibitors Grades 9-12

Weaving - Rag, Placemats	Adult Exhibitors Exhibitors Grades 6-8 Exhibitors Grades 9-12
Weaving - Rag, Purse	Adult Exhibitors Exhibitors Grades 6-8 Exhibitors Grades 9-12
Weaving - Rag, Rug	Adult Exhibitors Exhibitors Grades 6-8 Exhibitors Grades 9-12
Weaving - Rag, Table Runner	Adult Exhibitors Exhibitors Grades 6-8 Exhibitors Grades 9-12
Weaving - Rag, Wall Hanging	Adult Exhibitors Exhibitors Grades 6-8 Exhibitors Grades 9-12
Weaving - Recycled Materials, Wine Tote	Adult Exhibitors Exhibitors Grades 6-8 Exhibitors Grades 9-12
Weaving - Recycled Materials, Large or Small Totes	Adult Exhibitors Exhibitors Grades 6-8 Exhibitors Grades 9-12
Weaving - Recycled Materials, Placemats	Adult Exhibitors Exhibitors Grades 6-8 Exhibitors Grades 9-12
Weaving - Recycled Materials, Table Runner	Adult Exhibitors Exhibitors Grades 6-8 Exhibitors Grades 9-12
Weaving - Yarn, Baby Blanket	Adult Exhibitors Exhibitors Grades 6-8 Exhibitors Grades 9-12
Weaving - Yarn, Dishtowel, Potholder, etc.	Adult Exhibitors Exhibitors Grades 6-8 Exhibitors Grades 9-12
Weaving - Yarn, Scarf	Adult Exhibitors Exhibitors Grades 6-8 Exhibitors Grades 9-12
Weaving - Yarn, Shawl	Adult Exhibitors Exhibitors Grades 6-8 Exhibitors Grades 9-12
z_Other Weaving, (not listed)	Adult Exhibitors Exhibitors Grades 6-8 Exhibitors Grades 9-12

**NOTE: Woven Christmas items can be entered under
Seasonal/Celebration Decorations**

WOOD CRAFT

Wood Bowl or Platter	Adult Exhibitors
Wood Box or Small Chest	Adult Exhibitors
Wood Bird House	Adult Exhibitors Exhibitors Grades 6-8 Exhibitors Grades 9-12
Wood Carving (Animal, Fowl, Figure, Fish & Other)	Adult Exhibitors Exhibitors Grades 6-8 Exhibitors Grades 9-12
Wood Carving (Chip, Relief, etc.)	Adult Exhibitors
Wood Furniture	Adult Exhibitors Exhibitors Grades 9-12
Wood Toy	Adult Exhibitors
Wood Yard Decoration	Adult Exhibitors
y_Any Wood Craft (Not Carved) Item	Exhibitors Grades K-2 Exhibitors Grades 3-5 Exhibitors Grades 6-8 Exhibitors Grades 9-12





BAKED GOODS



PREMIUMS

BLUE	1ST Place	\$8
RED	2ND Place	\$6
WHITE	3RD Place	\$4

All entries must be the work of the exhibitor.

All entries, (except cakes) once cooled, must be submitted on a sturdy plate and in a clear plastic bag. Cakes must be submitted in a covered cake carrier.

Submit quantity and size as specified.

BREAD

Biscuits (6)	Adult Exhibitors Exhibitors Grades K-2 Exhibitors Grades 3-5 Exhibitors Grades 6-8 Exhibitors Grades 9-12
Biscuits, Sourdough (6)	Adult Exhibitors
Bread, Skillet or Soda (1 loaf)	Adult Exhibitors
Bread, Sourdough (1/2 Loaf)	Adult Exhibitors
Bread, White Flour (1/2 Loaf)	Adult Exhibitors
Bread, Whole Wheat Flour (1/2 Loaf)	Adult Exhibitors
Muffin, Corn Meal, (6 muffins, squares or sticks)	Adult Exhibitors Exhibitors Grades K-2 Exhibitors Grades 3-5 Exhibitors Grades 6-8 Exhibitors Grades 9-12
Muffins, Sweet (6) (Identify)	Adult Exhibitors Exhibitors Grades K-2 Exhibitors Grades 3-5 Exhibitors Grades 6-8

Quickbread, Fruit, Nut or Vegetable (1/2 loaf)	Adult Exhibitors
Rolls, Cinnamon (6)	Adult Exhibitors Exhibitors Grades 9-12
Rolls, Yeast	Adult Exhibitors Exhibitors Grades 6-8 Exhibitors Grades 9-12
y_Any Other Bread Loaf (1/2 loaf) (Identify, not listed above)	Exhibitors Grades 3-5 Exhibitors Grades 6-8 Exhibitors Grades 9-12
z_Other Bread (1/2 loaf) (Identify, not listed above)	Adult Exhibitors

CAKES

Angel Food Cake (Whole)	Adult Exhibitors
Cake Pops (6)	Adult Exhibitors Exhibitors Grades K-2 Exhibitors Grades 3-5 Exhibitors Grades 6-8 Exhibitors Grades 9-12
Carrot Cake (1/2 Cake)	Adult Exhibitors
Chocolate Cake (1/2 Cake)	Adult Exhibitors
Coconut Cake (1/2 Cake)	Adult Exhibitors
Cup Cakes (3)	Adult Exhibitors Exhibitors Grades K-2 Exhibitors Grades 3-5 Exhibitors Grades 6-8 Exhibitors Grades 9-12



German Chocolate Cake (½ Cake)	Adult Exhibitors
Jelly Roll Cake (½ Cake)	Adult Exhibitors
Lemon Cake (½ Cake)	Adult Exhibitors
Pound Cake, Non-traditional (½ Cake) (Identify)	Adult Exhibitors Exhibitors Grades 6-8 Exhibitors Grades 9-12
Pound Cake, Traditional (½ Cake)	Adult Exhibitors Exhibitors Grades 6-8 Exhibitors Grades 9-12
Spice Cake (½ Cake)	Adult Exhibitors
White or Yellow Cake (½ Cake)	Adult Exhibitors
z_Other Cake (½ Cake) (not listed, identify)	Adult Exhibitors Exhibitors Grades 6-8 Exhibitors Grades 9-12

CANDY

Chocolate Candy (6)	Adult Exhibitors Exhibitors Grades 6-8 Exhibitors Grades 9-12
Chocolate Truffles (6)	Adult Exhibitors
Fudge (6)	Adult Exhibitors Exhibitors Grades 6-8 Exhibitors Grades 9-12
Hard Candies or Lollipops (6)	Adult Exhibitors Exhibitors Grades 6-8 Exhibitors Grades 9-12
Molded Candies (6)	Adult Exhibitors Exhibitors Grades 6-8 Exhibitors Grades 9-12
Peanut Brittle (6)	Adult Exhibitors
Seafoam or Divinity (6)	Adult Exhibitors
z_Other Candy (6) (Identify, not listed above)	Adult Exhibitors Exhibitors Grades K-2 Exhibitors Grades 3-5 Exhibitors Grades 6-8 Exhibitors Grades 9-12

COOKIES

Bar Cookies (6)	Adult Exhibitors Exhibitors Grades K-2 Exhibitors Grades 3-5 Exhibitors Grades 6-8 Exhibitors Grades 9-12
Brownies (6)	Adult Exhibitors Exhibitors Grades K-2 Exhibitors Grades 3-5 Exhibitors Grades 6-8 Exhibitors Grades 9-12
Decorated Cookies (6)	Adult Exhibitors Exhibitors Grades K-2 Exhibitors Grades 3-5 Exhibitors Grades 6-8 Exhibitors Grades 9-12
Drop Cookies (6)	Adult Exhibitors Exhibitors Grades K-2 Exhibitors Grades 3-5 Exhibitors Grades 6-8 Exhibitors Grades 9-12
Filled or Sandwich Cookies (6)	Adult Exhibitors Exhibitors Grades K-2 Exhibitors Grades 3-5 Exhibitors Grades 6-8 Exhibitors Grades 9-12
Shaped (Cutter, Mold, Pressed) (6)	Adult Exhibitors Exhibitors Grades K-2 Exhibitors Grades 3-5 Exhibitors Grades 6-8 Exhibitors Grades 9-12
z_Other Cookies, (not listed, identify) (6)	Adult Exhibitors Exhibitors Grades K-2 Exhibitors Grades 3-5 Exhibitors Grades 6-8 Exhibitors Grades 9-12



DECORATED CAKES

Entire “cake” must be entered. A cake form may be used. Only decoration is judged. Lightly cover or box cake so decorations are not damaged.

Cup Cakes or Squares Decorated (3)	Adult Exhibitors Exhibitors Grades 3-5 Exhibitors Grades 6-8 Exhibitors Grades 9-12
Novelty Pan Cake	Adult Exhibitors Exhibitors Grades 6-8 Exhibitors Grades 9-12
Original Designed Cake	Adult Exhibitors Exhibitors Grades 6-8 Exhibitors Grades 9-12
Wedding Cake	Adult Exhibitors Exhibitors Grades 9-12

PIES

Pies must be submitted in a disposable aluminum pan and once cooled, placed in a clear plastic bag.

No meringue or cream pies accepted.



Apple Pie (Whole Pie)	Adult Exhibitors Exhibitors Grades 6-8 Exhibitors Grades 9-12
Chocolate Pie (Whole Pie)	Adult Exhibitors Exhibitors Grades 6-8 Exhibitors Grades 9-12
Pecan Pie (Whole Pie)	Adult Exhibitors Exhibitors Grades 6-8 Exhibitors Grades 9-12
Pumpkin (Whole Pie)	Adult Exhibitors Exhibitors Grades 6-8 Exhibitors Grades 9-12
Sweet Potato (Whole Pie)	Adult Exhibitors Exhibitors Grades 6-8 Exhibitors Grades 9-12
z_Other Pie (Whole Pie) (Identify, not listed above)	Adult Exhibitors Exhibitors Grades 6-8 Exhibitors Grades 9-12



FIELD CROPS



PREMIUMS

BLUE	1ST Place	\$8
RED	2ND Place	\$6
WHITE	3RD Place	\$4

All entries must be grown since the last fair.

Small items should be submitted in a clear plastic bag.

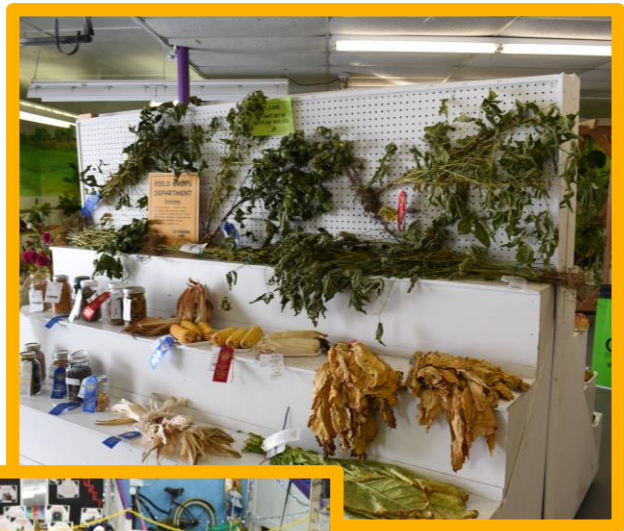
Seeds and Grains should be submitted in clear quart jar with lid and labeled.

Note quantity and size specified. If not specified, quantity should be sufficient number to fill a 5x7 inch tray. Tray will be provided.

Corn, Field (3)	Adult Exhibitors Exhibitors Grades K-2 Exhibitors Grades 3-5 Exhibitors Grades 6-8 Exhibitors Grades 9-12
Corn, Indian (3)	Adult Exhibitors Exhibitors Grades K-2 Exhibitors Grades 3-5 Exhibitors Grades 6-8 Exhibitors Grades 9-12
Cotton (1 Stalk)	Adult Exhibitors Exhibitors Grades K-2 Exhibitors Grades 3-5 Exhibitors Grades 6-8 Exhibitors Grades 9-12
Grain, Barley	Adult Exhibitors Exhibitors Grades K-2 Exhibitors Grades 3-5 Exhibitors Grades 6-8 Exhibitors Grades 9-12

Grain, Milo (2 stalks)	Adult Exhibitors Exhibitors Grades K-2 Exhibitors Grades 3-5 Exhibitors Grades 6-8 Exhibitors Grades 9-12
Grain, Oats	Adult Exhibitors Exhibitors Grades K-2 Exhibitors Grades 3-5 Exhibitors Grades 6-8 Exhibitors Grades 9-12
Grain, Rye	Adult Exhibitors Exhibitors Grades K-2 Exhibitors Grades 3-5 Exhibitors Grades 6-8 Exhibitors Grades 9-12
Grain, Wheat	Adult Exhibitors Exhibitors Grades K-2 Exhibitors Grades 3-5 Exhibitors Grades 6-8 Exhibitors Grades 9-12
Hay, Any Variety Size limited to 10" square pad and tied.	Adult Exhibitors Exhibitors Grades K-2 Exhibitors Grades 3-5 Exhibitors Grades 6-8 Exhibitors Grades 9-12
Cowpea Seeds (field, crowder, blackeye peas) Entries must be in a clear quart jar with lid and labeled.	Adult Exhibitors Exhibitors Grades K-2 Exhibitors Grades 3-5 Exhibitors Grades 6-8 Exhibitors Grades 9-12
Soybean Seeds Entries must be in a clear quart jar with lid and labeled.	Adult Exhibitors Exhibitors Grades K-2 Exhibitors Grades 3-5 Exhibitors Grades 6-8 Exhibitors Grades 9-12
Sunflower Seeds Entries must be in a clear quart jar with lid and labeled.	Adult Exhibitors Exhibitors Grades K-2 Exhibitors Grades 3-5 Exhibitors Grades 6-8 Exhibitors Grades 9-12
Soybeans, Any Variety (1 stalk)	Adult Exhibitors Exhibitors Grades K-2 Exhibitors Grades 3-5 Exhibitors Grades 6-8 Exhibitors Grades 9-12

<p>Tobacco (1Hand)</p>	<p>Adult Exhibitors Exhibitors Grades K-2 Exhibitors Grades 3-5 Exhibitors Grades 6-8 Exhibitors Grades 9-12</p>
<p>z_Other Field Crop (Identify, not listed above)</p>	<p>Adult Exhibitors Exhibitors Grades K-2 Exhibitors Grades 3-5 Exhibitors Grades 6-8 Exhibitors Grades 9-12</p>
<p>z_Other Grain (Identify, not listed above)</p>	<p>Adult Exhibitors Exhibitors Grades K-2 Exhibitors Grades 3-5 Exhibitors Grades 6-8 Exhibitors Grades 9-12</p>
<p>z_Other Seeds (Identify, not listed above) Entries must be in a clear quart jar with lid and labeled.</p>	<p>Adult Exhibitors Exhibitors Grades K-2 Exhibitors Grades 3-5 Exhibitors Grades 6-8 Exhibitors Grades 9-12</p>



FOOD CONSERVATION

PREMIUMS

BLUE	1ST Place	\$8
RED	2ND Place	\$6
WHITE	3RD Place	\$4

ALL entries must be preserved by the Exhibitors since the last fair.

Canned entries must be in standard canning jar with lid and screw band seal.

Each entry must be labeled with date, contents, processing method and time. Example " Peaches, hot pack, boiling water canner, 20 minutes. July 13, 2022"

Jars will not be opened for judging. Note quantity and size specified.

JUDGING STANDARDS:

Proper Container; Jar labeled, dated with processing method and time; Good Seal; Correct Headspace; Natural Color; Clarity; Nothing Floating; Uniformity in Pieces; Proper Canning Method Used; Stability; and Lack of Crystals.



For information on safe food preservation refer to the National Center for Food Preservation (<http://nchfp.uga.edu/>) or contact NC Cooperative Extension, Lee County at 919-775-5624 to assist you

BUTTERS

Butters are pureed fruit cooked to a smooth consistency.

Apple, ½ Pint or Pint	Adult Exhibitors
Pear, ½ Pint or Pint	Adult Exhibitors
z_Other Butter (Identify, not listed above), ½ Pint or Pint	Adult Exhibitors

CONSERVES

Conserves are a fruit mixture of jam consistency and usually contains nuts, raisins, and often citrus.

Any Conserves (Identify), ½ Pint or Pint	Adult Exhibitors
--	------------------

FRUIT, CANNED

Apples, Pint or Quart	Adult Exhibitors
Applesauce, Pint or Quart	Adult Exhibitors
Blackberries, Pint or Quart	Adult Exhibitors
Blueberries, Pint or Quart	Adult Exhibitors
Dewberries, Pint or Quart	Adult Exhibitors
Figs, Pint or Quart	Adult Exhibitors
Peaches, Pint or Quart	Adult Exhibitors
Pears, Pint or Quart	Adult Exhibitors
Plums, Pint or Quart	Adult Exhibitors
y_Any Fruit (Identify), Pint or Quart	Exhibitors Grades 3-5 Exhibitors Grades 6-8 Exhibitors Grades 9-12
Z_Other Fruit (not listed, identify) Pint or quart	Adult Exhibitors

JAM

Jams are crushed fruit cooked to a smooth consistency that will mound on a spoon but not jelly firm.

Blackberry Jam, ½ Pint or Pint	Adult Exhibitors
Blueberry Jam, ½ Pint or Pint	Adult Exhibitors
Dewberry Jam, ½ Pint or Pint	Adult Exhibitors
Peach Jam, ½ Pint or Pint	Adult Exhibitors
Plum Jam, ½ Pint or Pint	Adult Exhibitors
Raspberry Jam, ½ Pint or Pint	Adult Exhibitors
Strawberry Jam, ½ Pint or Pint	Adult Exhibitors
y_Any Jam (Identify), ½ Pint or Pint	Exhibitors Grades 3-5 Exhibitors Grades 6-8 Exhibitors Grades 9-12
z_Other Jam (Identify, not listed above, ½ Pint or Pint	Adult Exhibitors

JELLY

Jellies are fruit juice boiled down with sugar and pectin added to make a soft, clear, elastic consistency.

Apple Jelly ½ Pint or Pint	Adult Exhibitors
Blackberry Jelly, ½ Pint or Pint	Adult Exhibitors
Blueberry Jelly, ½ Pint or Pint	Adult Exhibitors
Crab Apple Jelly, ½ Pint or Pint	Adult Exhibitors
Dewberry Jelly, ½ Pint or Pint	Adult Exhibitors
Grape Jelly, ½ Pint or Pint	Adult Exhibitors
Peach Jelly, ½ Pint or Pint	Adult Exhibitors

Pear Jelly, ½ Pint or Pint	Adult Exhibitors
Pepper Jelly, Hot, ½ Pint or Pint	Adult Exhibitors
Pepper Jelly, Sweet ½ Pint or Pint	Adult Exhibitors
Plum Jelly, ½ Pint or Pint	Adult Exhibitors
y_Any Jelly (Identify), ½ Pint or Pint	Exhibitors Grades 3-5 Exhibitors Grades 6-8 Exhibitors Grades 9-12
z_Other Jelly (Identify, not listed above), ½ Pint or Pint	Adult Exhibitors

JUICE

Apple Juice, Quart or Larger	Adult Exhibitors
Grape Juice, Quart or Larger	Adult Exhibitors
Tomato Juice, Quart or Larger	Adult Exhibitors
y_Any Juice (Identify), Quart or Larger	Exhibitors Grades 3-5 Exhibitors Grades 6-8 Exhibitors Grades 9-12
z_Other Juice (identify), not listed above, Quart or Larger	Adult Exhibitors

MARMALADE

Marmalades are small pieces of fruit or citrus peel evenly suspended in a transparent soft jelly.

Any Marmalade (Identify), ½ Pint or Pint	Adult Exhibitors
---	-------------------------

PICKLES

Artichoke Pickles, Pint or Quart	Adult Exhibitors
Beet Pickles, Pint or Quart	Adult Exhibitors

Bread & Butter Pickles, Pint or Quart	Adult Exhibitors
Dill Pickles, Pint or Quart	Adult Exhibitors
Okra Pickles, Pint or Quart	Adult Exhibitors
Onion Pickles, Pint or Quart	Adult Exhibitors
Peach Pickles, Pint or Quart	Adult Exhibitors
Pear Pickles, Pint or Quart	Adult Exhibitors
Pepper Pickles, Pint or Quart	Adult Exhibitors
Sauerkraut (No Colored Jars), Pint or Quart	Adult Exhibitors
Sour Pickles, Pint or Quart	Adult Exhibitors
Squash Pickles, Pint or Quart	Adult Exhibitors
Sweet Pickles, Pint or Quart	Adult Exhibitors
Tomato Pickles, Pint or Quart	Adult Exhibitors
Watermelon Rind Pickles, Pint or Quart	Adult Exhibitors
y_Any Pickles (Identify), Pint or Quart	Exhibitors Grades 3-5 Exhibitors Grades 6-8 Exhibitors Grades 9-12
z_Other Pickles (Identify, not listed above), Pint or Quart	Adult Exhibitors

PRESERVES

Apple Preserves, ½ Pint or Pint	Adult Exhibitors
Damson Preserves, ½ Pint or Pint	Adult Exhibitors
Fig Preserves, ½ Pint or Pint	Adult Exhibitors
Grape Hull Preserves, ½ Pint or Pint	Adult Exhibitors
Peach Preserves, ½ Pint or Pint	Adult Exhibitors

Pear Preserves, ½ Pint or Pint	Adult Exhibitors
Strawberry Preserves, ½ Pint or Pint	Adult Exhibitors
y_Any Preserves (Identify), ½ Pint or Pint	Exhibitors Grades 3-5 Exhibitors Grades 6-8 Exhibitors Grades 9-12
z_Other Preserves (Identify, not listed above), ½ Pint or Pint	Adult Exhibitors

RELISHES

Artichoke Relish, ½ Pint or Pint	Adult Exhibitors
Chowchow Relish, ½ Pint or Pint	Adult Exhibitors
Pepper Relish, ½ Pint or Pint	Adult Exhibitors
Salsa Relish, ½ Pint or Pint	Adult Exhibitors
y_Any Relish (Identify), ½ Pint or Pint	Exhibitors Grades 3-5 Exhibitors Grades 6-8 Exhibitors Grades 9-12
z_Other Relish (Identify, not listed above), ½ Pint or Pint	Adult Exhibitors

VEGETABLES, CANNED

All low acid vegetables must be canned in a pressure canner.

High acid vegetables can be processed in a boiling water canner.

Research does not support the canning of yellow squash.

Beans, Green, Snapped, Pint or Quart	Adult Exhibitors
Beets, Pint or Quart	Adult Exhibitors
Butter or Lima Beans, Pint or Quart	Adult Exhibitors
Corn, Pint or Quart	Adult Exhibitors

Greens, Pint or Quart	Adult Exhibitors
Mixed Vegetables, Pint or Quart	Adult Exhibitors
Okra, Pint or Quart	Adult Exhibitors
Peas, Pint or Quart	Adult Exhibitors
Peppers, Hot, Pint or Quart	Adult Exhibitors
Potatoes, Pint or Quart	Adult Exhibitors
Tomatoes and Okra, Pint or Quart	Adult Exhibitors
Tomato Sauce, Pint or Quart	Adult Exhibitors
Tomatoes, Whole, Pint or Quart	Adult Exhibitors
Vegetable Soup, Pint or Quart	Adult Exhibitors
y_Any Vegetable (Identify), Pint or Quart	Exhibitors Grades 3-5 Exhibitors Grades 6-8 Exhibitors Grades 9-12
z_Other Vegetable (Identify, not listed above), Pint or Quart	Adult Exhibitors

OTHER CANNED ITEMS

Barbecue Sauce, Tomato Base, Pint or Quart	Adult Exhibitors
Barbecue Sauce, Vinegar Base, Pint or Quart	Adult Exhibitors
Broth, (Identify), Pint or Quart - NEW	Adult Exhibitors
Meat, Any (Identify), Pint or Quart	Adult Exhibitors
Spaghetti Sauce w/Meat, Pint or Quart	Adult Exhibitors
Spaghetti Sauce, Pint or Quart	Adult Exhibitors





HANDICRAFTS



BEST IN SHOW HANDICRAFTS: Considering blue ribbon winning exhibits, a \$50 premium and Best In Show ribbon will be awarded in age divisions 9-12 and Adult.

PREMIUMS

BLUE	1ST Place	\$8
RED	2ND Place	\$6
WHITE	3RD Place	\$4
BEST IN SHOW - HANDICRAFTS Grades 9-12, and Adult		\$50

APPLIQUE

Appliqué is ornamental needlework in which pieces of fabric in different shapes and patterns are sewn or stuck onto a larger piece to form a picture or pattern. Appliqué is a technique which is accomplished either by hand or machine.

Any Appliqué Item (Not on Quilt)	Adult Exhibitors
----------------------------------	------------------

CREWEL

Crewel embroidery, or crewelwork, is a type of surface embroidery using wool. A wide variety of different embroidery stitches are used to follow a design outline applied to the fabric.

Crewel picture entry must be framed and include a hook or wire for hanging.

Crewel, Picture	Adult Exhibitors
Crewel, Pillow	Adult Exhibitors
Crewel, Stamped or Kit	Adult Exhibitors

CROCHET

Crochet is a process of creating fabric by interlocking loops of yarn, thread, or strands of other materials using a crochet hook.

The salient difference between crochet and knitting, beyond the implements used for their production, is that each stitch in crochet is completed before proceeding with the next one, while knitting keeps a large number of stitches open at a time.

Crochet, Afghan	Adult Exhibitors
Crochet, Bag/Purse	Adult Exhibitors
Crochet, Bonnet or Cap	Adult Exhibitors
Crochet, Booties	Adult Exhibitors
Crochet, Centerpiece (scarf, doily, etc.)	Adult Exhibitors
Crochet, Collar	Adult Exhibitors
Crochet, Decorative Item	Adult Exhibitors
Crochet, Doll Clothing	Adult Exhibitors
Crochet, Edge or Enhanced Item	Adult Exhibitors
Crochet, Infant Set	Adult Exhibitors
Crochet, Pillow	Adult Exhibitors
Crochet, Pot Holders (2)	Adult Exhibitors
Crochet, Stole, Cape or Poncho	Adult Exhibitors
Crochet, Sweater	Adult Exhibitors
Crochet, Table Cloth	Adult Exhibitors
Crochet, Toy (Doll, Animal, etc.)	Adult Exhibitors
Crochet, Vest	Adult Exhibitors

y_Any Crochet Item	Exhibitors Grades 3-5 Exhibitors Grades 6-8 Exhibitors Grades 9-12
z_Other Crochet Item (Identify, not listed above)	Adult Exhibitors

CROSS STITCH

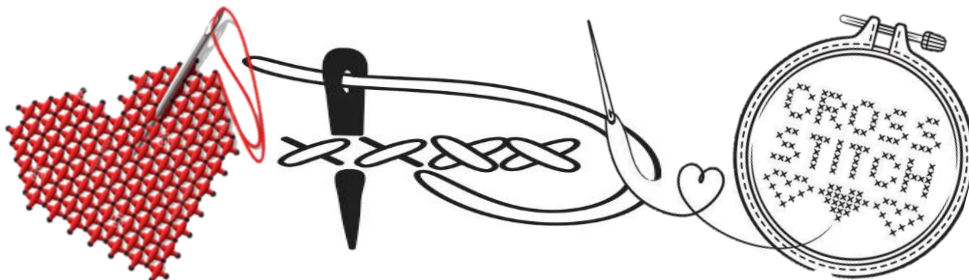
Cross-stitch is a form of embroidery in which X-shaped stitches are used to form a design.

Picture entry must be framed and include a hook or wire for hanging.

Counted Cross Stitch: threads are counted on a piece of even weave fabric (such as linen) in each direction so that the stitches are of uniform size and appearance.

Stamped Cross Stitch is done on designs printed on fabric with stitching over the printed pattern.

Counted Cross-Stitch Picture	Adult Exhibitors
Counted Cross-Stitch Pillow	Adult Exhibitors
Counted Cross-Stitch, Original Design	Adult Exhibitors
Stamped Cross-Stitch, Picture	Adult Exhibitors
Stamped Cross-Stitch, Pillow	Adult Exhibitors
Stamped Cross-Stitch, Original Design	Adult Exhibitors
y_Any Cross-Stitch Item	Exhibitors Grades 6-8 Exhibitors Grades 9-12
z_Other Counted Cross-Stitch Item (Identify, not listed above)	Adult Exhibitors
z_Other Stamped Cross-Stitch Item, (Identify, not listed above)	Adult Exhibitors



EMBROIDERY

Embroidery is the craft of decorating fabric or other materials using a needle to apply thread or yarn, which are available in a wide variety of colors. Embroidery may incorporate pearls, beads, quills, sequins and is usually seen on caps, hats, coats, blankets, dress shirts, denim, dresses, stockings, and golf shirts.

Some of the basic techniques or stitches are chain stitch, buttonhole or blanket stitch, running stitch, satin stitch, cross stitch.

Picture entry must be framed and include a hook or wire for hanging.

Embroidered Picture	Adult Exhibitors
Embroidered Pillow	Adult Exhibitors
Embroidery on Garment	Adult Exhibitors
Embroidery on Household Item	Adult Exhibitors
y_Any Embroidered Item	Exhibitors Grades 6-8 Exhibitors Grades 9-12
z_Other Embroidery Item (Identify, not listed above)	Adult Exhibitors

KNITTING

Knitting is a method by which yarn is manipulated to create a textile or fabric for use in many types of garments. Knitting creates multiple loops of yarn, called stitches, in a line or tube. Knitting has multiple active stitches on the needle at one time.

Knitted fabric consists of a number of consecutive rows of intermeshing of loops. Knitting may be done by hand or by machine and will use different types of yarns, needle sizes, and stitch types to achieve knitted fabrics with different properties.

Knitted, Afghan	Adult Exhibitors
Knitted, Bag or Purse	Adult Exhibitors
Knitted, Bonnet or Cap	Adult Exhibitors
Knitted, Booties	Adult Exhibitors

Knitted, Doll Clothing	Adult Exhibitors
Knitted, Garment (Not Sweater)	Adult Exhibitors
Knitted, Household Item	Adult Exhibitors
Knitted, Infant Set	Adult Exhibitors
Knitted, Pillow	Adult Exhibitors
Knitted, Socks	Adult Exhibitors
Knitted, Sweater	Adult Exhibitors
Knitted, Vest	Adult Exhibitors
y_Any Knitted Item	Exhibitors Grades 3-5 Exhibitors Grades 6-8 Exhibitors Grades 9-12
z_Other Knitted Item (Identify, not listed above)	Adult Exhibitors

NEEDLEPOINT

Needlepoint is a form of counted thread embroidery in which yarn is stitched through a stiff open weave canvas. Most needlepoint designs completely cover the canvas.

Although needlepoint may be worked in a variety of stitches, many needlepoint designs use only a simple tent stitch and rely upon color changes in the yarn to construct the pattern.

The degree of detail in needlepoint depends on the thread count of the underlying mesh fabric. Needlepoint worked on fine canvas is known as petit point. Due to the inherent stiffness of needlepoint, common uses include eyeglass cases, holiday ornaments, pillows, purses, upholstery, and wall hangings

Picture entry must be framed and include a hook or wire for hanging.

Needlepoint, Charted	Adult Exhibitors
Needlepoint, Original Design	Adult Exhibitors

Needlepoint, Picture	Adult Exhibitors
Needlepoint, Pillow	Adult Exhibitors
y_Any Needlepoint Item	Exhibitors Grades 6-8 Exhibitors Grades 9-12
z_Other Needlepoint Item (Identify, not listed above)	Adult Exhibitors

PLASTIC CANVAS

Plastic canvas is a lightweight plastic craft material with regularly spaced holes in imitation of embroidery canvas. Plastic canvas is typically used as a foundation for needlepoint or other canvas work embroidery, usually in acrylic or wool knitting yarn.

Due to its rigidity, it is useful for creating 3-dimensional objects such as tissue box covers, small jewelry boxes, handbags, and other decorative objects.

Plastic Canvas Basket/Box	Adult Exhibitors
Plastic Canvas Decoration	Adult Exhibitors
y_Any Plastic Canvas Item (not holiday)	Exhibitors Grades K-2 Exhibitors Grades 3-5 Exhibitors Grades 6-8 Exhibitors Grades 9-12
z_Other Plastic Canvas Item (not holiday) (Identify, not listed above)	Adult Exhibitors

PUNCH NEEDLE

Punch needle is a form of embroidery that's also related to rug hooking. Instead of stitching through the fabric, punch needle pushes thread or yarn into the fabric, while keeping the needle on the surface. The result of punch needle embroidering is a highly textured design made of loops that shows off its connection to rug making. Small to Medium size designs can be entered.

Floral Design	Adult Exhibitors Exhibitors Grades 3-5 Exhibitors Grades 6-8 Exhibitors Grades 9-12
----------------------	--

Geometric Design	Adult Exhibitors Exhibitors Grades 3-5 Exhibitors Grades 6-8 Exhibitors Grades 9-12
Other Punch Needle Design	Adult Exhibitors Exhibitors Grades 3-5 Exhibitors Grades 6-8 Exhibitors Grades 9-12

QUILTS

BEST IN SHOW - QUILTS: Considering blue ribbon winning exhibits, a \$50 premium and Best In Show ribbon will be awarded will be awarded in age divisions 9-12 and Adult.

BEST IN SHOW - QUILTS Grades 9-12, and Adult	\$50
---	-------------

Quilting is the process of sewing two or more layers of fabric together to make a thicker padded material, usually to create a quilt, quilted garment or home decor item.

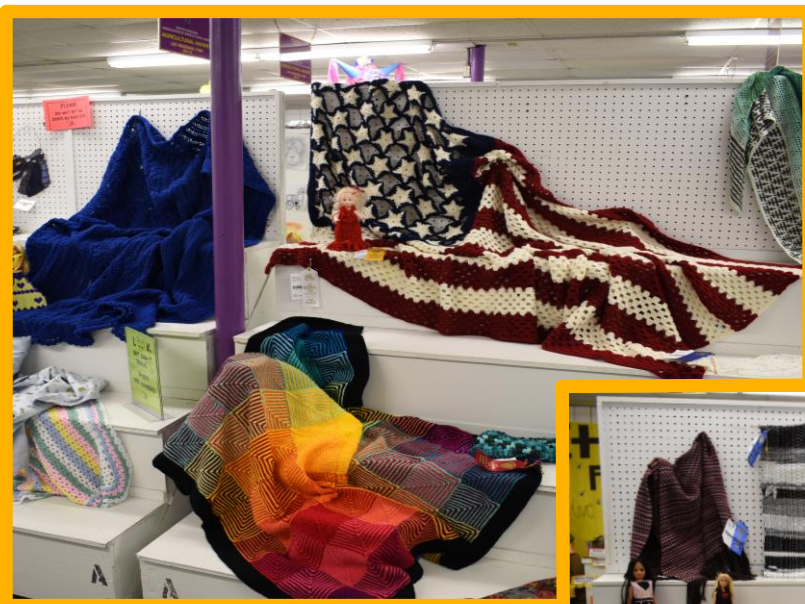


Typically, quilting is done with three layers: the top fabric or quilt top, batting or insulating material and backing material.

Picture entry must be framed and include a hook or wire for hanging

Applique Quilt, Hand Sewn	Adult Exhibitors
Applique Quilt, Machine Sewn	Adult Exhibitors
Baby Quilt, Hand or Machine Sewn	Adult Exhibitors Exhibitors Grades 6-8 Exhibitors Grades 9-12
Pieced Quilt, Hand or Machine Sewn	Adult Exhibitors Exhibitors Grades 6-8 Exhibitors Grades 9-12

Quilted Accessory (purse, totebag, etc.), Hand or Machine Sewn	Adult Exhibitors Exhibitors Grades 6-8 Exhibitors Grades 9-12
Quilted Garment, Hand or Machine Sewn	Adult Exhibitors
Quilted Picture, Hand or Machine Sewn	Adult Exhibitors
Quilted Pillow, Hand or Machine Quilted	Adult Exhibitors Exhibitors Grades 6-8 Exhibitors Grades 9-12
Quilted Wall Hanging or Table Runner, Hand or Machine Sewn	Adult Exhibitors
y_Any Quilted Item, Hand or Machine Sewn	Exhibitors Grades 3-5 Exhibitors Grades 6-8 Exhibitors Grades 9-12
z_Other Quilt Technique (embroidery, crazy quilt, cathedral window, yo-yo), Hand or Machine Sewn	Adult Exhibitors





HORTICULTURE



PREMIUMS

BLUE	1ST Place	\$8
RED	2ND Place	\$6
WHITE	3RD Place	\$4

ARRANGEMENTS

Dried Arrangement	Adult Exhibitors Exhibitors Grades 9-12
Fresh Cut Arrangement	Adult Exhibitors Exhibitors Grades 9-12
Mixed Arrangement (Dried and Fresh)	Adult Exhibitors Exhibitors Grades 9-12
Most Creative Container w/Arrangement	Adult Exhibitors Exhibitors Grades 9-12
Most Unusual Arrangement	Adult Exhibitors Exhibitors Grades 9-12
y_Any Type Arrangement	Exhibitors Grades K-2 Exhibitors Grades 3-5 Exhibitors Grades 6-8

CONTAINER-GROWN PLANTS

Container size is a maximum of 24 inches tall and 24 inches wide.

No hanging or wall mounted containers.

Containers should be clean, attractive, and with water saucer.

Exhibitors will be responsible for handling large and heavy entries.



Begonia, Tuberous	Adult Exhibitors Exhibitors Grades 9-12
Begonia, Any Other (not listed, identify)	Adult Exhibitors Exhibitors Grades 9-12
Cactus, Christmas	Adult Exhibitors Exhibitors Grades 9-12
Cactus, True	Adult Exhibitors Exhibitors Grades 9-12
Chrysanthemum	Adult Exhibitors Exhibitors Grades 9-12
Coleus, Any Color	Adult Exhibitors Exhibitors Grades 9-12
Dieffenbachia	Adult Exhibitors Exhibitors Grades 9-12
Fern, Bird Nest	Adult Exhibitors Exhibitors Grades 9-12
Fern, Boston	Adult Exhibitors Exhibitors Grades 9-12
Fern, Foxtail	Adult Exhibitors Exhibitors Grades 9-12
Fern, Rabbits Foot	Adult Exhibitors Exhibitors Grades 9-12
Fern, Other Variety (not listed, identify)	Adult Exhibitors Exhibitors Grades 9-12
Geranium, Any Color	Adult Exhibitors Exhibitors Grades 9-12
Hosta, Any Variety	Adult Exhibitors Exhibitors Grades 9-12
Impatiens, Any Variety	Adult Exhibitors Exhibitors Grades 9-12
Ivy, Any Variety	Adult Exhibitors Exhibitors Grades 9-12
Jade	Adult Exhibitors Exhibitors Grades 9-12
Mixed, More Than One Type of Plant	Adult Exhibitors Exhibitors Grades 9-12
Most Unusual Container Grown Plant	Adult Exhibitors Exhibitors Grades 9-12
Pepper, Ornamental	Adult Exhibitors Exhibitors Grades 9-12
Philodendron, Small Heart Shaped Leaf	Adult Exhibitors Exhibitors Grades 9-12
Philodendron, Split Leaf	Adult Exhibitors Exhibitors Grades 9-12
Sedum	Adult Exhibitors Exhibitors Grades 9-12

Sempervivum (Hens and Chicks)	Adult Exhibitors Exhibitors Grades 9-12
Snake Plant (Mother-In-Law's Tongue)	Adult Exhibitors Exhibitors Grades 9-12
Succulent, Any (Identify)	Adult Exhibitors Exhibitors Grades 9-12
y_Any Container Grown Plant (not listed, identify)	Exhibitors Grades 3-5 Exhibitors Grades 6-8 Exhibitors Grades 9-12
z_Other Container Grown Plant (not listed, identify)	Adult Exhibitors
African Violet, Large Leaf (6" and wider)	Adult Exhibitors Exhibitors Grades 9-12
African Violet, Small Leaf (Less than 6" wide)	Adult Exhibitors Exhibitors Grades 9-12
Aloe, Medicinal (vera or barbadensis)	Adult Exhibitors Exhibitors Grades 9-12
Begonia, Angel Wing	Adult Exhibitors Exhibitors Grades 9-12
Begonia, Rex	Adult Exhibitors Exhibitors Grades 9-12

CUT FLOWERS

All entries should be true to variety or type, and in good condition.

Quality of bloom will be judged.

NO artificial materials allowed.

Containers must be provided by the Exhibitors and should be attractive and enhance the entry but will not be judged.

For BEST presentation, Flowers should be entered in a vase with water.

Stems should be long enough to stay immersed in water.

Bloom; a stem with a single flower.

Stem; a stalk with more than one bloom.



Collection is a set of 3 or more blooms

Blackeye Susan (2 Stems)	Adult Exhibitors Exhibitors Grades K-2 Exhibitors Grades 3-5 Exhibitors Grades 6-8 Exhibitors Grades 9-12
Celosia, Coxcomb Crested (2 Stems)	Adult Exhibitors Exhibitors Grades 9-12
Celosia, Plumed (2 Stems)	Adult Exhibitors Exhibitors Grades 9-12
Celosia, Wheat (2 Stems)	Adult Exhibitors Exhibitors Grades 9-12
Chrysanthemum (2 Stems)	Adult Exhibitors Exhibitors Grades 9-12
Cosmos (Collection)	Adult Exhibitors Exhibitors Grades 9-12
Dahlia (2 Stems)	Adult Exhibitors Exhibitors Grades 9-12
Daisy, Gerbera (2 Stem)	Adult Exhibitors Exhibitors Grades K-2 Exhibitors Grades 3-5 Exhibitors Grades 6-8 Exhibitors Grades 9-12
Daisy, Shasta (Collection)	Adult Exhibitors Exhibitors Grades K-2 Exhibitors Grades 3-5 Exhibitors Grades 6-8 Exhibitors Grades 9-12
Gardenia (2 Stems)	Adult Exhibitors Exhibitors Grades K-2 Exhibitors Grades 3-5 Exhibitors Grades 6-8 Exhibitors Grades 9-12
Gladiolus (2 Stems)	Adult Exhibitors Exhibitors Grades 9-12
Goldenrod (Collection)	Adult Exhibitors Exhibitors Grades 9-12
Lantana (Collection)	Adult Exhibitors Exhibitors Grades 9-12
Lily (2 Stems)	Adult Exhibitors Exhibitors Grades K-2 Exhibitors Grades 3-5 Exhibitors Grades 6-8 Exhibitors Grades 9-12

Marigold (Collection)	Adult Exhibitors Exhibitors Grades K-2 Exhibitors Grades 3-5 Exhibitors Grades 6-8 Exhibitors Grades 9-12
Rose, Miniature, Any Color (2 Stems)	Adult Exhibitors Exhibitors Grades K-2 Exhibitors Grades 3-5 Exhibitors Grades 6-8 Exhibitors Grades 9-12
Rose, Standard, Any Color (2 Stems)	Adult Exhibitors Exhibitors Grades K-2 Exhibitors Grades 3-5 Exhibitors Grades 6-8 Exhibitors Grades 9-12
Salvia, Any Color (Collection)	Adult Exhibitors Exhibitors Grades 9-12
Sedum, Any (Collection)	Adult Exhibitors Exhibitors Grades 9-12
Snapdragon, Any color (2 Stems)	Adult Exhibitors Exhibitors Grades 9-12
Sunflower, Any Color (2 Stems)	Adult Exhibitors Exhibitors Grades K-2 Exhibitors Grades 3-5 Exhibitors Grades 6-8 Exhibitors Grades 9-12
Zinnia, (3" or larger across), Any Color (2 Stems)	Adult Exhibitors Exhibitors Grades K-2 Exhibitors Grades 3-5 Exhibitors Grades 6-8 Exhibitors Grades 9-12
Zinnia, (Less than 3" across), Any Color (2 Stems)	Adult Exhibitors Exhibitors Grades K-2 Exhibitors Grades 3-5 Exhibitors Grades 6-8 Exhibitors Grades 9-12
z_Other Cut Flower (2 Stems or Collection, identified, not listed)	Adult Exhibitors Exhibitors Grades K-2 Exhibitors Grades 3-5 Exhibitors Grades 6-8 Exhibitors Grades 9-12

CUT FOLIAGE

Maximum length of foliage is 30 inches.

Coleus, Any Color	Adult Exhibitors
--------------------------	-------------------------

Dusty Miller Sencia (1 Stem)	Adult Exhibitors
Elephant Ears (1 leaf)	Adult Exhibitors
Eucalyptus (1 Stem/Branch)	Adult Exhibitors
Hosta (1 stem)	Adult Exhibitors
Ivy, English (3 stems)	Adult Exhibitors
Lambs Ear (1 Stem)	Adult Exhibitors
z_Other Cut Foliage (not listed, identify)	Adult Exhibitors

FRUITS

Crab Apples (3)	Adult Exhibitors Exhibitors Grades 9-12
Heritage Apples (3) Identify	Adult Exhibitors Exhibitors Grades 9-12
Apple, Any Variety (3) (not listed, identify)	Adult Exhibitors Exhibitors Grades K-2 Exhibitors Grades 3-5 Exhibitors Grades 6-8 Exhibitors Grades 9-12
Blueberries (Snack Size Bag)	Adult Exhibitors Exhibitors Grades K-2 Exhibitors Grades 3-5 Exhibitors Grades 6-8 Exhibitors Grades 9-12
Figs (3)	Adult Exhibitors Exhibitors Grades K-2 Exhibitors Grades 3-5 Exhibitors Grades 6-8 Exhibitors Grades 9-12
Grapes, Black (Pint Size Bag)	Adult Exhibitors Exhibitors Grades K-2 Exhibitors Grades 3-5 Exhibitors Grades 6-8 Exhibitors Grades 9-12
Grapes, White (Pint Size Bag)	Adult Exhibitors Exhibitors Grades K-2 Exhibitors Grades 3-5 Exhibitors Grades 6-8 Exhibitors Grades 9-12

Kiwi (3)	Adult Exhibitors Exhibitors Grades K-2 Exhibitors Grades 3-5 Exhibitors Grades 6-8 Exhibitors Grades 9-12
Pears (3)	Adult Exhibitors Exhibitors Grades K-2 Exhibitors Grades 3-5 Exhibitors Grades 6-8 Exhibitors Grades 9-12
Persimmons, American (3)	Adult Exhibitors Exhibitors Grades K-2 Exhibitors Grades 3-5 Exhibitors Grades 6-8 Exhibitors Grades 9-12
z_Other Fruit (3) (not listed, identify)	Adult Exhibitors Exhibitors Grades K-2 Exhibitors Grades 3-5 Exhibitors Grades 6-8 Exhibitors Grades 9-12

HANGING BASKET

Weight limit is 25 pounds.

Exhibitors will be responsible for handling large and heavy entries.

Begonia, Any	Adult Exhibitors
Fern, Bird's Nest	Adult Exhibitors
Fern, Boston	Adult Exhibitors
Fern, Foxtail	Adult Exhibitors
Fern, Rabbit Foot	Adult Exhibitors
Fern, Other Variety (not listed, identify)	Adult Exhibitors
Impatiens, Any	Adult Exhibitors
Ivy, English, Variegated, Dwarf	Adult Exhibitors
Ivy, Swedish	Adult Exhibitors
Petunia	Adult Exhibitors

Philodendron, Small Heart Shaped Leaf	Adult Exhibitors
Philodendron, Split Leaf	Adult Exhibitors
Pothos, Any	Adult Exhibitors
Spider Plant/Airplane Plant	Adult Exhibitors Exhibitors 9-12
Wandering Jew	Adult Exhibitors
z_Other Hanging Basket (not listed, identify)	Adult Exhibitors

HERBS

To keep Herb cuttings fresh, enter them in water.

Basil, Any Variety (5 cuttings)	Adult Exhibitors Exhibitors Grades K-2 Exhibitors Grades 3-5 Exhibitors Grades 6-8 Exhibitors Grades 9-12
Catnip (5 cuttings)	Adult Exhibitors Exhibitors Grades 9-12
Chives (5 cuttings)	Adult Exhibitors Exhibitors Grades 9-12
Cilantro (5 cuttings)	Adult Exhibitors Exhibitors Grades K-2 Exhibitors Grades 3-5 Exhibitors Grades 6-8 Exhibitors Grades 9-12
Dill (5 cuttings)	Adult Exhibitors Exhibitors Grades K-2 Exhibitors Grades 3-5 Exhibitors Grades 6-8 Exhibitors Grades 9-12
Garlic, With Tops (3)	Adult Exhibitors Exhibitors Grades 9-12
Mint, Any Variety (5 cuttings)	Adult Exhibitors Exhibitors Grades K-2 Exhibitors Grades 3-5 Exhibitors Grades 6-8 Exhibitors Grades 9-12
Oregano, Any Variety (5 cuttings)	Adult Exhibitors Exhibitors Grades 9-12

Parsley (5 cuttings)	Adult Exhibitors Exhibitors Grades K-2 Exhibitors Grades 3-5 Exhibitors Grades 6-8 Exhibitors Grades 9-12
Rosemary (5 cuttings)	Adult Exhibitors Exhibitors Grades K-2 Exhibitors Grades 3-5 Exhibitors Grades 6-8 Exhibitors Grades 9-12
Sage (5 cuttings)	Adult Exhibitors Exhibitors Grades K-2 Exhibitors Grades 3-5 Exhibitors Grades 6-8 Exhibitors Grades 9-12
Thyme (5 cuttings)	Adult Exhibitors Exhibitors Grades 9-12
z_Other Herb (5 cuttings), (not listed, identify)	Adult Exhibitors Exhibitors Grades K-2 Exhibitors Grades 3-5 Exhibitors Grades 6-8 Exhibitors Grades 9-12

TABLE TOP GARDENS

Size Limited to 20" wide x 6" deep.

Container should complement the garden.



Dish Garden	Adult Exhibitors Exhibitors Grades K-2 Exhibitors Grades 3-5 Exhibitors Grades 6-8 Exhibitors Grades 9-12
Fairy Garden	Adult Exhibitors Exhibitors Grades K-2 Exhibitors Grades 3-5 Exhibitors Grades 6-8 Exhibitors Grades 9-12

Terrarium	Adult Exhibitors Exhibitors Grades K-2 Exhibitors Grades 3-5 Exhibitors Grades 6-8 Exhibitors Grades 9-12
------------------	--

TREE FRUITS

Acorns (Pint Size Bag)	Exhibitors Grades K-2 Exhibitors Grades 3-5
Chestnut, Green (Pint Size Bag)	Adult Exhibitors Exhibitors Grades K-2 Exhibitors Grades 3-5 Exhibitors Grades 6-8 Exhibitors Grades 9-12
Hickory Nuts, Green (Pint Size Bag)	Exhibitors Grades K-2 Exhibitors Grades 3-5 Exhibitors Grades 6-8 Exhibitors Grades 9-12
Pecans, Green (Pint Size Bag)	Adult Exhibitors Exhibitors Grades K-2 Exhibitors Grades 3-5 Exhibitors Grades 6-8 Exhibitors Grades 9-12
Pecans, New Crop In Shell (Pint Size Bag)	Adult Exhibitors Exhibitors Grades K-2 Exhibitors Grades 3-5 Exhibitors Grades 6-8 Exhibitors Grades 9-12
Pecans, Shelled, From Prior Year (Pint Size Bag)	Adult Exhibitors Exhibitors Grades K-2 Exhibitors Grades 3-5 Exhibitors Grades 6-8 Exhibitors Grades 9-12
Walnuts, New Crop In Shell (Pint Size Bag)	Adult Exhibitors Exhibitors Grades K-2 Exhibitors Grades 3-5 Exhibitors Grades 6-8 Exhibitors Grades 9-12
z_Other Nuts, New Crop, (Pint Size Bag), (Identified, not listed)	Adult Exhibitors



VEGETABLES

Beets, with tops (3)	Adult Exhibitors Exhibitors Grades 9-12
Broccoli (1 head)	Adult Exhibitors Exhibitors Grades 9-12
Butter Beans (Pint Size Bag)	Adult Exhibitors Exhibitors Grades K-2 Exhibitors Grades 3-5 Exhibitors Grades 6-8 Exhibitors Grades 9-12
Cabbage (1 head)	Adult Exhibitors Exhibitors Grades 9-12
Carrots, with tops (3)	Adult Exhibitors Exhibitors Grades K-2 Exhibitors Grades 3-5 Exhibitors Grades 6-8 Exhibitors Grades 9-12
Cauliflower (1 head)	Adult Exhibitors Exhibitors Grades 9-12
Citron (1)	Adult Exhibitors
Collards (1 Head)	Adult Exhibitors Exhibitors Grades K-2 Exhibitors Grades 3-5 Exhibitors Grades 6-8 Exhibitors Grades 9-12
Corn, Sweet (3 ears)	Adult Exhibitors Exhibitors Grades K-2 Exhibitors Grades 3-5 Exhibitors Grades 6-8 Exhibitors Grades 9-12
Cucumbers (3)	Adult Exhibitors Exhibitors Grades K-2 Exhibitors Grades 3-5 Exhibitors Grades 6-8 Exhibitors Grades 9-12

Eggplant (3)	Adult Exhibitors Exhibitors Grades K-2 Exhibitors Grades 3-5 Exhibitors Grades 6-8 Exhibitors Grades 9-12
Green Beans (Pint Size Bag)	Adult Exhibitors Exhibitors Grades K-2 Exhibitors Grades 3-5 Exhibitors Grades 6-8 Exhibitors Grades 9-12
Okra (3)	Adult Exhibitors Exhibitors Grades K-2 Exhibitors Grades 3-5 Exhibitors Grades 6-8 Exhibitors Grades 9-12
Onions, Any Color (3)	Adult Exhibitors Exhibitors Grades 9-12
Peas, Green, in shell (Pint Size Bag)	Adult Exhibitors Exhibitors Grades K-2 Exhibitors Grades 3-5 Exhibitors Grades 6-8 Exhibitors Grades 9-12
Peppers, Bell any color (3)	Adult Exhibitors Exhibitors Grades K-2 Exhibitors Grades 3-5 Exhibitors Grades 6-8 Exhibitors Grades 9-12
Peppers, Hot (3)	Adult Exhibitors Exhibitors Grades K-2 Exhibitors Grades 3-5 Exhibitors Grades 6-8 Exhibitors Grades 9-12
Peppers, (3) Other (not listed identify)	Adult Exhibitors Exhibitors Grades K-2 Exhibitors Grades 3-5 Exhibitors Grades 6-8 Exhibitors Grades 9-12
Potatoes, Red (3)	Adult Exhibitors Exhibitors Grades K-2 Exhibitors Grades 3-5 Exhibitors Grades 6-8 Exhibitors Grades 9-12
Potatoes, Sweet, Any Color (3)	Adult Exhibitors Exhibitors Grades K-2 Exhibitors Grades 3-5 Exhibitors Grades 6-8 Exhibitors Grades 9-12

Potatoes, White (3)	Adult Exhibitors Exhibitors Grades K-2 Exhibitors Grades 3-5 Exhibitors Grades 6-8 Exhibitors Grades 9-12
Pumpkin (1)	Adult Exhibitors Exhibitors Grades K-2 Exhibitors Grades 3-5 Exhibitors Grades 6-8 Exhibitors Grades 9-12
Pumpkin, Biggest (1)	Adult Exhibitors Exhibitors Grades 9-12
Squash, Acorn (2)	Adult Exhibitors Exhibitors Grades 9-12
Squash, Butternut (2)	Adult Exhibitors Exhibitors Grades 9-12
Squash, Cushaw (2)	Adult Exhibitors Exhibitors Grades 9-12
Squash, Spaghetti (2)	Adult Exhibitors Exhibitors Grades 9-12
Squash, Turban (2)	Adult Exhibitors Exhibitors Grades 9-12
Tomatoes, Cherry or Grape (Pint Size Bag)	Adult Exhibitors Exhibitors Grades K-2 Exhibitors Grades 3-5 Exhibitors Grades 6-8 Exhibitors Grades 9-12
Tomatoes, Roma (Pint Size Bag)	Adult Exhibitors Exhibitors Grades K-2 Exhibitors Grades 3-5 Exhibitors Grades 6-8 Exhibitors Grades 9-12
Tomatoes, Large (3)	Adult Exhibitors Exhibitors Grades K-2 Exhibitors Grades 3-5 Exhibitors Grades 6-8 Exhibitors Grades 9-12
Turnips, With Tops (2)	Adult Exhibitors Exhibitors Grades K-2 Exhibitors Grades 3-5 Exhibitors Grades 6-8 Exhibitors Grades 9-12
Watermelon (1)	Adult Exhibitors Exhibitors Grades K-2 Exhibitors Grades 3-5 Exhibitors Grades 6-8 Exhibitors Grades 9-12

Watermelon, Biggest (1)	Adult Exhibitors Exhibitors Grades 9-12
Other Vegetable (Identified, not listed above)	Adult Exhibitors Exhibitors Grades K-2 Exhibitors Grades 3-5 Exhibitors Grades 6-8 Exhibitors Grades 9-12





LIVESTOCK



EXHIBITOR PENS

PREMIUMS

CLEANEST PEN	\$75
FILLED PEN	\$100

Exhibitors should call Mitchell Williams 919-770-6953 to reserve Pen space for cattle and other animals, and to arrange drop off and pick up times.

All Exhibitors will receive a pen premium.

Animals are on exhibit all week.

Hay and water provided daily. Owner should supply any other feed.

Pens must be cleaned by owner on a daily basis.

Exhibitors pen premiums awarded at the conclusion of the fair.

LIVESTOCK CONTEST

Information about the Livestock Contests is included in the 2024 Lee Regional Fair Contest Catalog and online at <https://lee.ces.ncsu.edu/2024-4-h-farm-credit-showmanship-circuit/>

Livestock Contest include: Heifer & Steer Beef Cattle Shows; Beef Cattle Showmanship; Meat Goat Show; Meat Goat Showmanship; Broiler & Pullet Contest and “Eggs To Poultry Project”.

4-H participants in the Livestock Contest must register online at FairEntry.com under LIVESTOCK by Friday, September 6, 2024 by 6:00 pm.

Non-4-H participants are asked to contact NC Cooperative Extension, Lee County at 919-775-5624 for information on participation.

POULTRY & FOWL EXHIBITS

PREMIUMS - YOUTH & ADULTS

Blue	\$10
Red	\$8



For more information or to reserve pens, contact Mitchell Williams 919-770-6953. Please call ahead to reserve space for large birds such as turkeys, as large pen space is limited.

Exhibitors are encouraged to exhibit poultry and miscellaneous fowl that are of high quality and representative of the breed. The Danish Evaluation System of judging will be used. Under this system each exhibit is compared to the ideal for that category. Exhibits receive either an excellent (Blue), or good (Red) award. Since each exhibit is compared to the ideal rather than to other exhibits, there may be multiple ribbons as the evaluator sees fit.

The Breed should be indicated on the entry card. No Breed can compete in more than one show class.

By law, all chickens and turkey placed on exhibit in North Carolina that have not had pullorum-typhoid test within the last 90 days, must be tested prior to being placed on exhibit and they must test negative. An agent from NCDA will be on site Tuesday, 1-5pm prior to the Fair opening, to test each bird.



All birds must be picked up on Sunday, after the Barn closes between 5-7 pm.

CLASSES - YOUTH & ADULTS:

Cock (Rooster, Male)

Cockerel (Young Rooster, Male)

Pen of Mature Birds (1 male, 2 females)

Pen of Young Birds (1 male, 2 females)

Turkey Hen

Hen (Female)

Pullet (Young Hen)

Pen of Guineas (2)

Pen of Pigeons (2)

Turkey Male

MISCELLANEOUS

PREMIUMS

BLUE	1ST Place	\$8
RED	2ND Place	\$6
WHITE	3RD Place	\$4

Due to space limitation oversized items must be cleared with the exhibit hall manager before entering. Entries exhibited in the past should not be entered.

ANTIQUES (BEFORE 1960)

For educational purposes, please include a description of the item and owner's name (on back) on a 5x8 inch card.

The Danish Evaluation System of judging will be used. Under this system each exhibit is compared to the ideal for that category.

Exhibits will receive either an excellent (Blue), good (Red) or worthy (White) award.



Since each entry is compared to the ideal and not to other entries, there may be multiple placings (Blue, Red, White) awarded in each category.

Antique Linens	Adult Exhibitors Exhibitors Grades 9-12
Furniture, Small Piece	Adult Exhibitors Exhibitors Grades 9-12
Hand Tool, Farm	Adult Exhibitors Exhibitors Grades 9-12
Hand Tool, Kitchen	Adult Exhibitors Exhibitors Grades 9-12
House Decoration	Adult Exhibitors Exhibitors Grades 9-12
Household Accessory	Adult Exhibitors Exhibitors Grades 9-12

Kitchen Item (Not Hand Tool)	Adult Exhibitors Exhibitors Grades 9-12
Vintage Doll (dressed)	Adult Exhibitors Exhibitors Grades 9-12
Vintage Quilt	Adult Exhibitors Exhibitors Grades 9-12
Vintage Sign	Adult Exhibitors Exhibitors Grades 9-12
Vintage Toy	Adult Exhibitors Exhibitors Grades 9-12

BEER - ADULT EXHIBITORS ONLY

Bottles must be labeled with type of contents.

Ale, Homemade (1 Bottle)	Adult Exhibitors
Ale, Professional/Commercial (1 Bottle)	Adult Exhibitors
Craft Beer, Homemade (1 Bottle)	Adult Exhibitors
Craft Beer, Professional/Commercial (1 Bottle)	Adult Exhibitors
Lager – Homemade (1 Bottle)	Adult Exhibitors
Lager – Professional/Commercial (1 Bottle)	Adult Exhibitors

CIDER - ADULT EXHIBITORS ONLY

Bottles must be labeled with type of contents.

Hard Cider (Alcoholic), Homemade (1 Bottle)	Adult Exhibitors
Non-Alcoholic Cider, Homemade (1 Bottle)	Adult Exhibitors

BEESWAX

Beeswax Cake	Adult Exhibitors
Beeswax Item (Candle, Carving, etc.), Identify	Adult Exhibitors

CANE SYRUP

Cane Syrup, pint or quart	Adult Exhibitors
----------------------------------	-------------------------

DRIED ITEMS



Dried Flowers, Identify	Adult Exhibitors Exhibitors Grades K-2 Exhibitors Grades 3-5 Exhibitors Grades 6-8 Exhibitors Grades 9-12
Dried Fruit, Identify	Adult Exhibitors Exhibitors Grades K-2 Exhibitors Grades 3-5 Exhibitors Grades 6-8 Exhibitors Grades 9-12
Dried Herbs	Adult Exhibitors Exhibitors Grades K-2 Exhibitors Grades 3-5 Exhibitors Grades 6-8 Exhibitors Grades 9-12
Dried Sunflower Head (1)	Adult Exhibitors Exhibitors Grades K-2 Exhibitors Grades 3-5 Exhibitors Grades 6-8 Exhibitors Grades 9-12
Dried Vegetables, Identify	Adult Exhibitors Exhibitors Grades K-2 Exhibitors Grades 3-5 Exhibitors Grades 6-8 Exhibitors Grades 9-12
z_Other, Dried Item, Identify	Adult Exhibitors Exhibitors Grades K-2 Exhibitors Grades 3-5 Exhibitors Grades 6-8 Exhibitors Grades 9-12

EGGS

Chicken (12 In Egg Carton)	Adult Exhibitors Exhibitors Grades K-2 Exhibitors Grades 3-5 Exhibitors Grades 6-8 Exhibitors Grades 9-12
Any Other Eggs (6 In Container), Identify	Adult Exhibitors Exhibitors Grades K-2 Exhibitors Grades 3-5 Exhibitors Grades 6-8 Exhibitors Grades 9-12

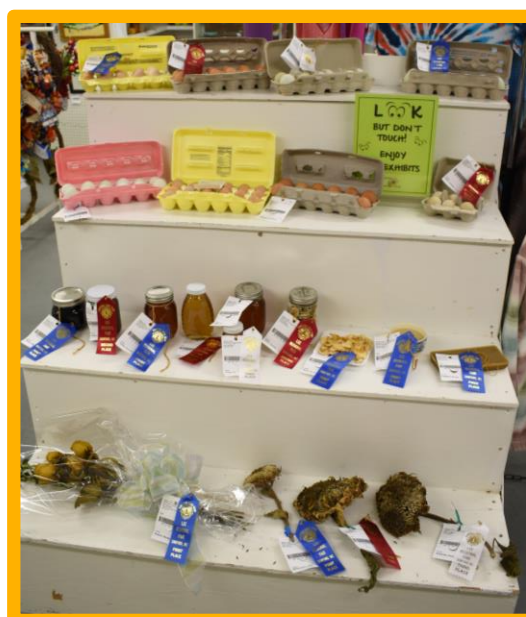
HONEY

Honey Chunk Comb, Dark (1 Pint or Quart)	Adult Exhibitors Exhibitors Grades 9-12
Honey Chunk Comb, Light (1 Pint or Quart)	Adult Exhibitors Exhibitors Grades 9-12
Honey Extracted, Dark (1 Pint or Quart)	Adult Exhibitors Exhibitors Grades 9-12
Honey Extracted, Light (1 Pint or Quart)	Adult Exhibitors Exhibitors Grades 9-12
Honey Frame (1)	Adult Exhibitors Exhibitors Grades 9-12

HOMEMADE SOAP

Cold process soap making is the method most often used by soap makers who make soap from scratch. It's called "cold" process because no additional heat is added during the soap making process, however the process itself does generate heat.

Soaps produced via the cold process method are opaque and usually have a creamy feel to the bar. Without any additives that change the color, the soap ranges from white-white to creamy-tan, depending on the oils used in making the soap.



Cold process soaps will continue to get harder as they age because additional water evaporates out of the soap.

Hot process soap making, uses additional heat in the soap making process. The chemical reaction is the same but occurs faster than in cold process soap making.

Because of the additional heat, the finished soap bar tends to feel smoother to the touch. The hardness of the bar again depends on the selection of oils, amount of water used in the process and length of time allowed for water to evaporate out of the finished bar.

Hot process soap is opaque and ranges from white-white to creamy-tan depending on the oils used, although clear soaps can be produced.

Cold Process Soap (2 Bars)	Adult Exhibitors Exhibitors Grades 9-12
Hot Process Soap (2 Bars)	Adult Exhibitors Exhibitors Grades 9-12

TRASH TO TREASURE RECYCLED ITEMS

Items must be made from recycled materials.

Items cannot be over 36 inches tall (exception is made for furniture) and weigh over 10 pounds.

Item must be made, collected, grown, etc. since last year's fair.



Fabric, Yarn or Thread	Adult Exhibitors Exhibitors Grades K-2 Exhibitors Grades 3-5 Exhibitors Grades 6-8 Exhibitors Grades 9-12
Glass and/or Ceramic	Adult Exhibitors Exhibitors Grades K-2 Exhibitors Grades 3-5 Exhibitors Grades 6-8 Exhibitors Grades 9-12
Metals	Adult Exhibitors Exhibitors Grades K-2 Exhibitors Grades 3-5 Exhibitors Grades 6-8 Exhibitors Grades 9-12

Paper and/or Cardboard	Adult Exhibitors Exhibitors Grades K-2 Exhibitors Grades 3-5 Exhibitors Grades 6-8 Exhibitors Grades 9-12
Plastics	Adult Exhibitors Exhibitors Grades K-2 Exhibitors Grades 3-5 Exhibitors Grades 6-8 Exhibitors Grades 9-12
Re-purposed, Furniture, Small Item	Adult Exhibitors Exhibitors Grades 9-12
z_Other Recyclable Item (Identify, not listed above)	Adult Exhibitors Exhibitors Grades K-2 Exhibitors Grades 3-5 Exhibitors Grades 6-8 Exhibitors Grades 9-12

VINEGARS - ADULT EXHIBITORS ONLY

Bottles must be labeled with type of contents.

Vinegar, Homemade (1 Bottle)	Adult Exhibitors
-------------------------------------	-------------------------

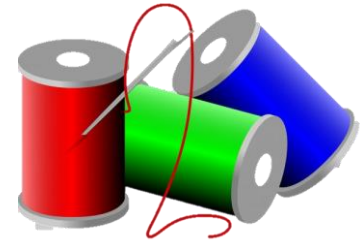
WINES - ADULT EXHIBITORS ONLY

Bottles must be labeled with type of contents.

Fruit/Berry Wine, Homemade (1 Bottle)	Adult Exhibitors
Fruit/Berry Wine, Professional (1 Bottle)	Adult Exhibitors
Red/Pink Grape Wine, Homemade (1 Bottle)	Adult Exhibitors
Red/Pink Grape Wine, Professional (1 Bottle)	Adult Exhibitors
White Grape Wine, Homemade (1 Bottle)	Adult Exhibitors
White Grape Wine, Professional (1 Bottle)	Adult Exhibitors
z_Other Wine (Identify, Not Listed Above), Homemade (1 Bottle)	Adult Exhibitors
z_Other Wine (Identify, Not Listed Above), Professional (1 Bottle)	Adult Exhibitors



SEWING



PREMIUMS

BLUE	1ST Place	\$8
RED	2ND Place	\$6
WHITE	3RD Place	\$4

Clothing items should be secured on plain wire hanger and covered with a clear plastic bag.

Entries exhibited in the past should not be entered again.



INFANT CLOTHING

Accessories (Mittens, Headbands, Beanies, Hats; etc.)	Adult Exhibitors Exhibitors Grades 3-5 Exhibitors Grades 6-8 Exhibitors Grades 9-12
Body Suit	Adult Exhibitors Exhibitors Grades 6-8 Exhibitors Grades 9-12
Christening Gown	Adult Exhibitors
Jumper	Adult Exhibitors Exhibitors Grades 6-8 Exhibitors Grades 9-12
Romper	Adult Exhibitors Exhibitors Grades 6-8 Exhibitors Grades 9-12
Sleep Gown (swaddle)	Adult Exhibitors Exhibitors Grades 6-8 Exhibitors Grades 9-12



CLOTHING



Apron	Adult Exhibitors Exhibitors Grades 3-5 Exhibitors Grades 6-8 Exhibitors Grades 9-12
Bag or Purse	Adult Exhibitors Exhibitors Grades 3-5 Exhibitors Grades 6-8 Exhibitors Grades 9-12
Blouse or Shirt	Adult Exhibitors
Children's Play Clothes	Adult Exhibitors
Children's Smocking	Adult Exhibitors
Clothing Accessory (identify)	Adult Exhibitors Exhibitors Grades 3-5 Exhibitors Grades 6-8 Exhibitors Grades 9-12
Coat or Jacket	Adult Exhibitors
Costume (identify)	Adult Exhibitors Exhibitors Grades 3-5 Exhibitors Grades 6-8 Exhibitors Grades 9-12
Doll Clothing (hand or machine sewn and displayed on doll)	Adult Exhibitors Exhibitors Grades 3-5 Exhibitors Grades 6-8 Exhibitors Grades 9-12
Dress	Adult Exhibitors Exhibitors Grades 6-8 Exhibitors Grades 9-12
Jumper	Adult Exhibitors
Men's Tie	Adult Exhibitors Exhibitors Grades 3-5 Exhibitors Grades 6-8 Exhibitors Grades 9-12
Pajamas	Adult Exhibitors Exhibitors Grades 6-8 Exhibitors Grades 9-12

Pants or Shorts	Adult Exhibitors Exhibitors Grades 6-8 Exhibitors Grades 9-12
Skirt	Adult Exhibitors Exhibitors Grades 6-8 Exhibitors Grades 9-12
Suit, Lined	Adult Exhibitors
Suit, Unlined	Adult Exhibitors
Vest	Adult Exhibitors Exhibitors Grades 6-8 Exhibitors Grades 9-12
Z_Other Clothing (Identify, not listed above)	Adult Exhibitors Exhibitors Grades 3-5 Exhibitors Grades 6-8 Exhibitors Grades 9-12

HOUSEHOLD ITEMS

Original Stuffed Item (Hand or Machine Sewn)	Adult Exhibitors Exhibitors Grades 3-5 Exhibitors Grades 6-8 Exhibitors Grades 9-12
Placemats with matching napkins (hand or machine sewn), not seasonal	Adult Exhibitors Exhibitors Grades 3-5 Exhibitors Grades 6-8 Exhibitors Grades 9-12
Table Cloth, Centerpiece or Table Scarf/Runner (hand or machine sewn)	Adult Exhibitors Exhibitors Grades 3-5 Exhibitors Grades 6-8 Exhibitors Grades 9-12
z_Other Sewn Household Item (not listed, identify)	Adult Exhibitors Exhibitors Grades 3-5 Exhibitors Grades 6-8 Exhibitors Grades 9-12

**Please share with the Fair Office
any suggestions for deletions or
additions of entries for next year.**



THE TRADITION LIVES ON!
SEPTEMBER 11-15, 2024

**Sanford
Lions Club**



Sponsored by
The Sanford Lions Club
www.SanfordLionsClub.com

Lions Club Fairgrounds
505 North 7th St. Sanford, NC
LeeRegionalFair@gmail.com
www.LeeRegionalFair.com

